

Model: CC-04 (ABC)

- Our company keep down the authority of amending the product design and specification, sorry to will not offer any notice.
- The product in the printed materials may be slightly different from the actual product and shall be subject to the actual product
- Our company reserve the final explanation right for all the contents.

Sauna room Installation instruction

Thank you very much for purchasing our **sauna product**.
The product will serve your health sincerely and
make your life more comfortable, more perfect
and more fashionable. Please read the
installation instructions carefully before using
the sauna.

Catalogue

- 1. decomposition diagram of product -----1

- 2. Installation preparation -----2

- 3. Installation steps -----2

- 4. Attention -----7

- 5. Product maintenance -----8

● Please pay attention when using

1. Be sure to read the warning signs inside the sauna room and important safety instructions in the specification before using.
2. Please use towel to cushion your seat when using. If people sitting on towels, it can effectively prevent sweat dripping onto the board.

● Please pay attention after using

1. Please turn off the power in time.
2. Open the door to dissipate moisture and keep the sauna room dry.

● Cleaning of external surface stains outside sauna room

1. Wring the wet towel dry and wipe up the stain.
2. Stubborn stains scrub with oxalic acid

● Because the body is made of natural wood, cannot scrape the surface with sharp hard objects.

● There is natural color difference in red cedar. Please use at ease and do not deal with it.

● Cleaning of surface stains inside sauna room

1. Wring the wet towel dry and wipe up the stain.
2. Stubborn stains scrub with oxalic acid.
3. The stain that penetrated the surface of the board can be polished the stain by wood sand paper. Then wring the wet towel dry and wipe up the stain.

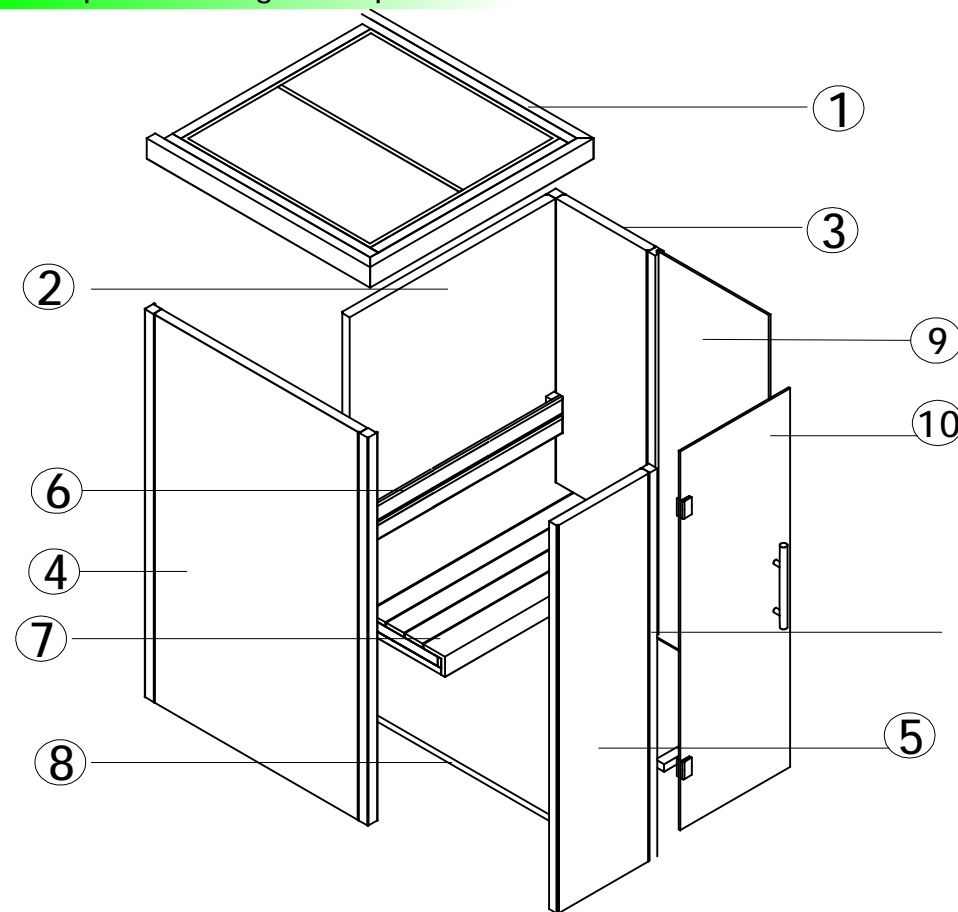
● Cleaning of glass stains

1. Use wet towel or goffered paper to clean the stains.
2. Clean the stubborn stains with alcohol, then wipe glass with dry cloth.

Pay attention to: Cannot scrape the surface with sharp hard objects to avoid scratching glass.

● Transportation and storage

1. Avoid rain, snow and strong collision during transportation.
2. Do not store in damp environment.
3. The climate is relatively dry in the north, please wring dry wet towels to wipe the product.
4. The climate is relatively humid in the south and products need ventilation.



| NO | NAME | Qty |
|----|------------------|-----|
| 1 | Roof | 1 |
| 2 | Roof | 1 |
| 3 | Right side board | 1 |
| 4 | Left side board | 1 |
| 5 | Front board | 1 |
| 6 | Backrest | 1 |
| 7 | Seat | 1 |
| 8 | Bottom board | 1 |
| 9 | Right side glass | 1 |

| NO. | NAME | Qty |
|-----|---------------|-----|
| 10 | Glass of door | 1 |
| 11 | Link wood | 5 |
| | | |
| | | |
| | | |
| | | |
| | | |
| | | |
| | | |

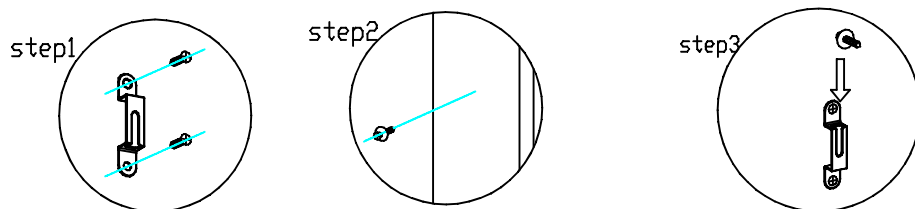
Product parameters

1. Rated Voltage: : AC220V±10% 50Hz/60Hz
2. Power: 800W+3000W
3. Size: 1200*1200*1900mm, 1500*1200*1900mm, 1800*1200*1900mm

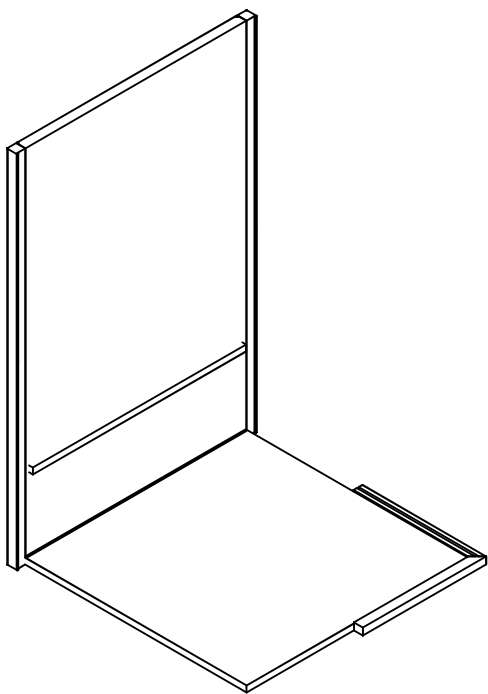
Installation preparation

1. Please read the installation instructions carefully after opening the box and check the quantity of spare parts and check whether there is transport damage. If you have any questions, please contact the local distributor or the company in time. You will get a satisfactory reply.
2. Frequently-used tools of install: Percussion drill (or electric drill), level ruler, tape measure, pencil, glue hammer, cross screwdriver, screwdriver.
3. To install and use our products, please put the pattern face or the sticker face outward if the glass has patterned or sticker.

Installation steps



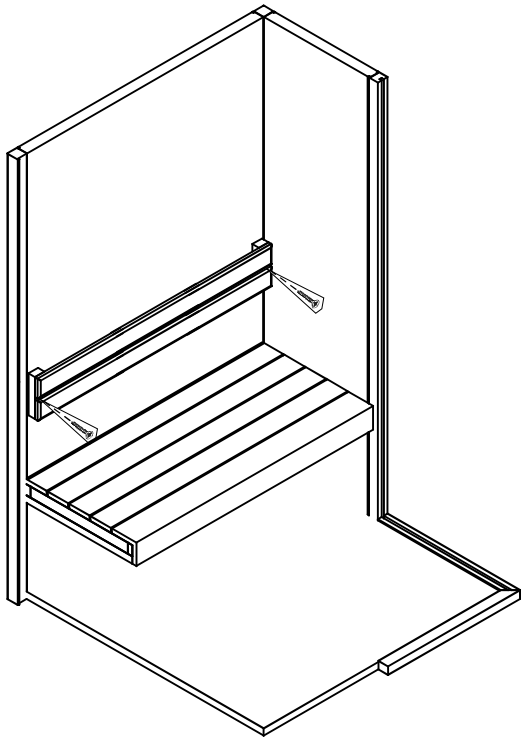
Installation Method



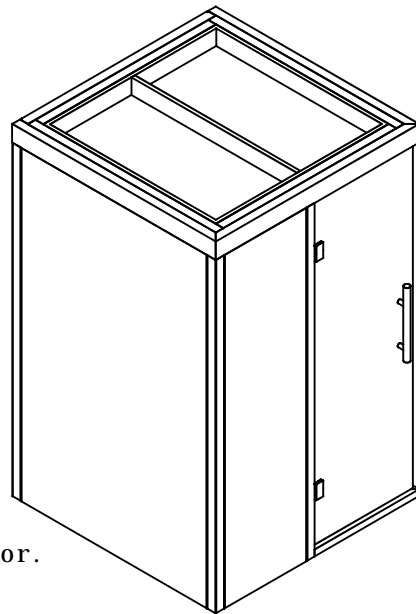
1. Upright backboard, fasten the two side link wood from top to bottom

Matters needing attention

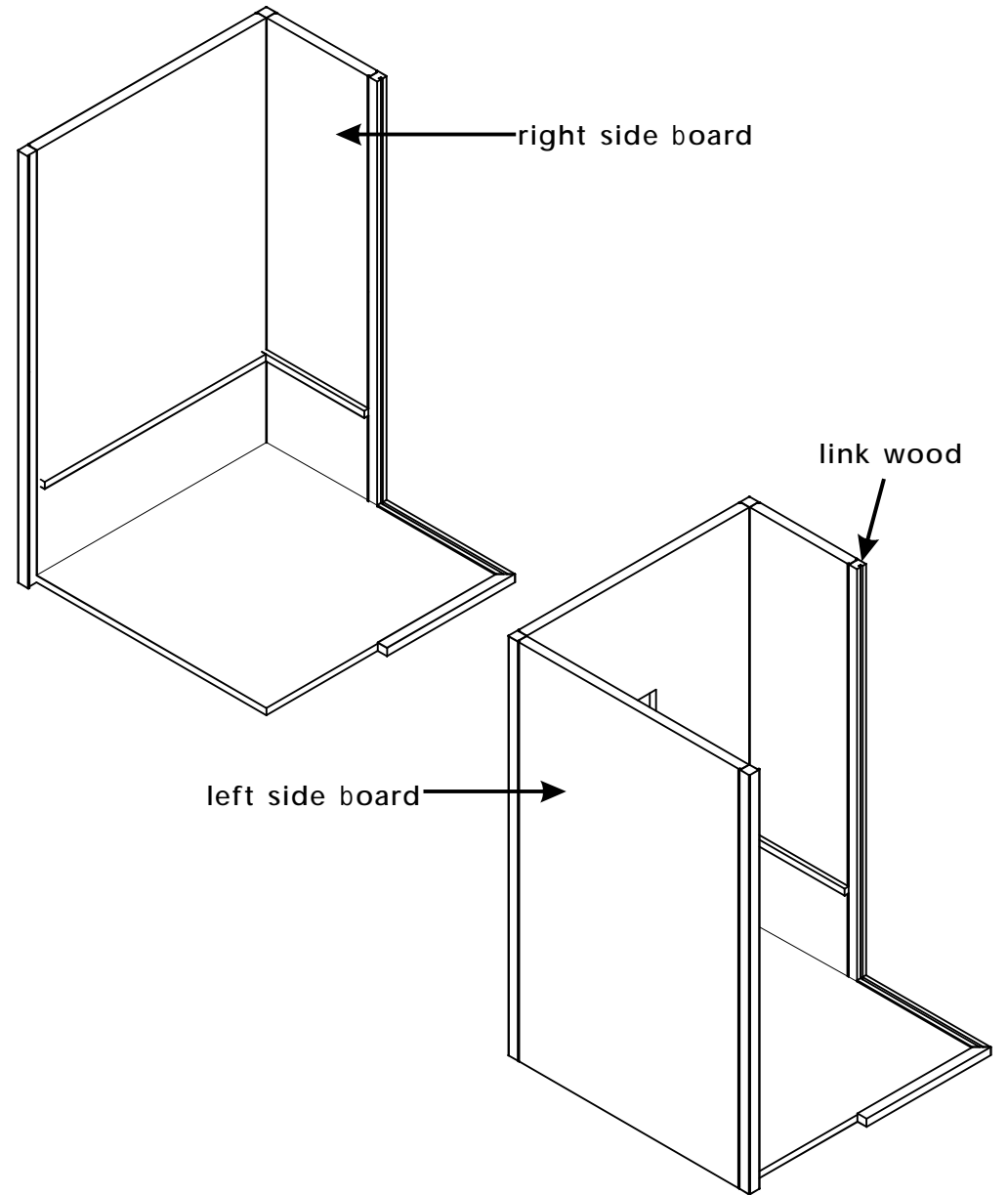
1. Do not place objects at the doorway of this product to prevent blocking the door.
2. Do not place objects on the top of the product to prevent blocking heat holes.
3. Do not place flammable or chemicals near the product.
4. Do not bake clothes or towels in this product to prevent fire.
5. Do not touch the infrared heating net cover metal parts to prevent scald.
6. Do not touch the lamp source when the product is working. If you need to change the lamp source, you should turn off the power supply and replace it after the lamp source is cooled.
7. Do not place pets in this product.
8. Do not spray water on the infrared heating body to prevent electric shock and damage the heating element.
9. Be sure to install a reliable leakage protection device, the power outlet must have a grounding wire and ensure the grounding wire is reliable. In addition, each time before using Perform a protection performance test for a leakage switch.
10. Do not use this product after drinking and people with high blood pressure and heart disease.
11. When a minors need to use sauna room, they must be operated and accompanied by adults.
12. Do not smoke in sauna room to avoid fire.
13. Sauna room can not work continuously for a long time avoid damaging the heating pipes.
14. If stop using, please turn off the power avoid long time electrifying.
15. If there is any doubt or need maintenance, please contact the dealer



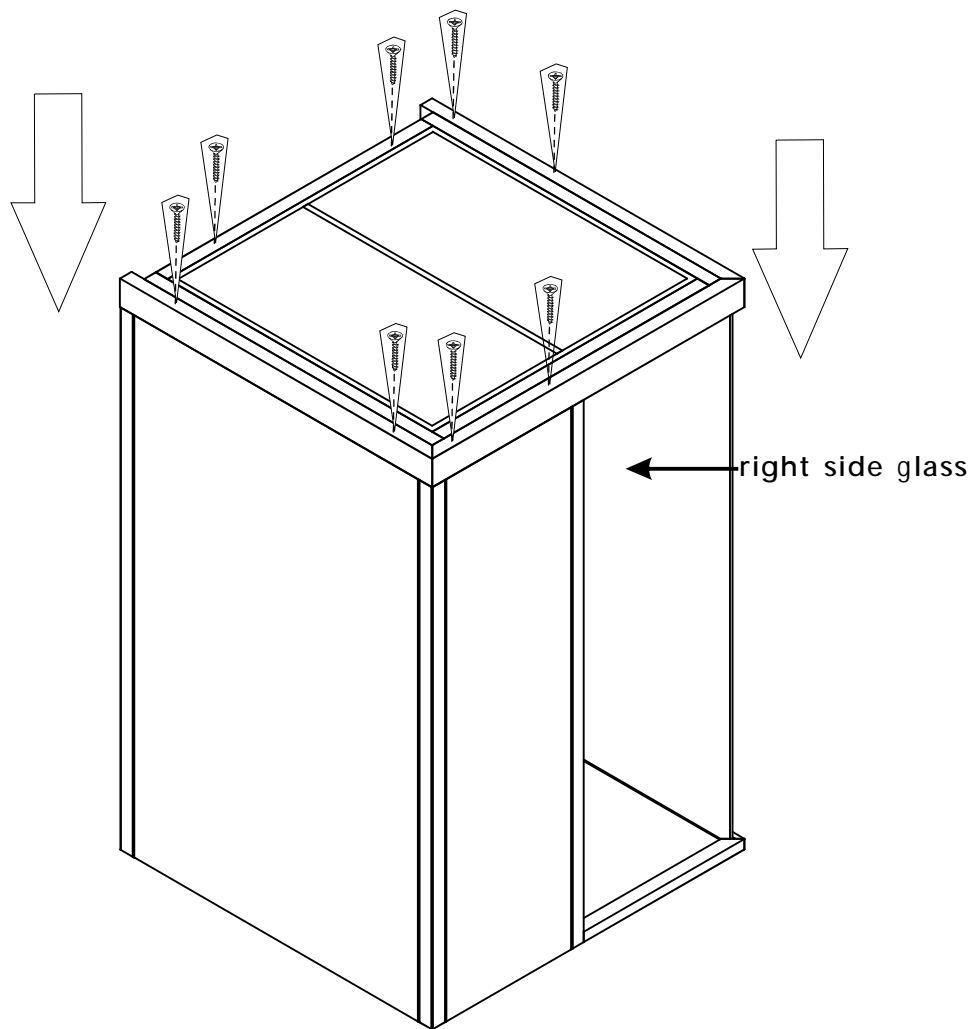
5. Install backrest.
Fix the backrest by 45*6 self-tapping screw, about 25 CM height.



6. Install the movable glass door.

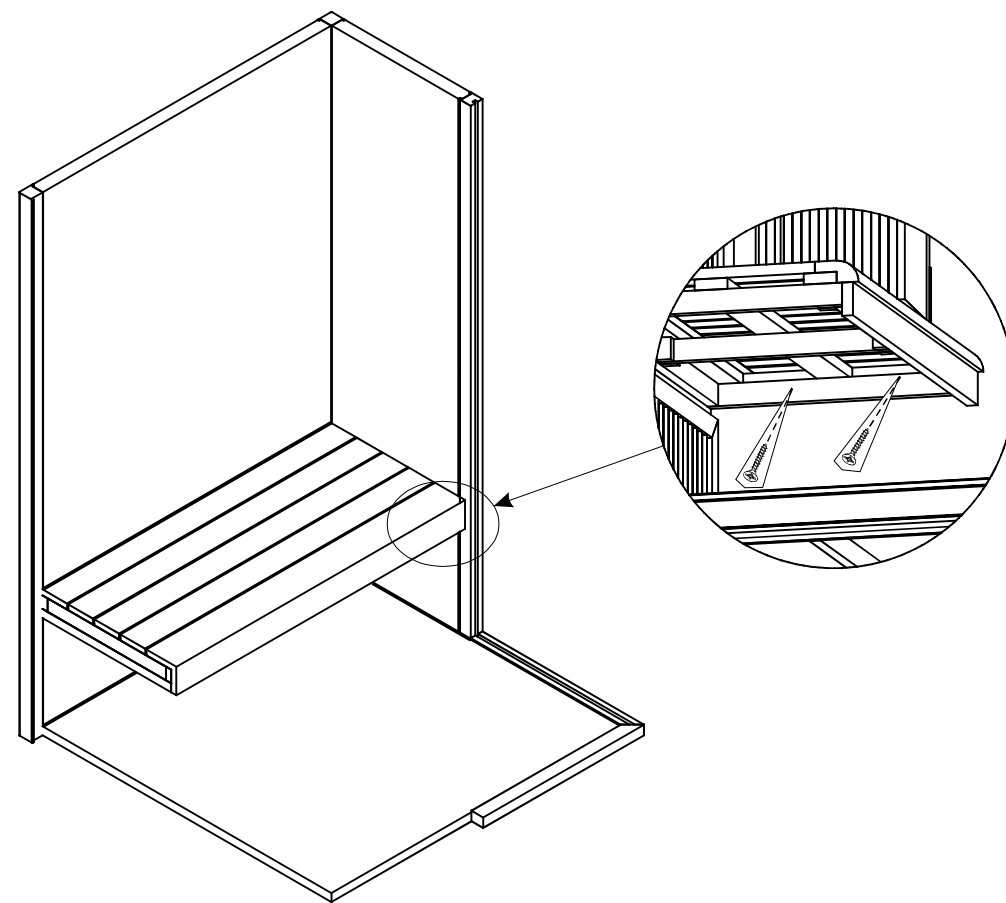


2. Same as first step, install right side board, left side board and link wood.



3. Install roof.

Put the right side glass into the card slot, then press the roof onto the wall, finally lock it by 45*6 self-tapping screw.



4. Install seat.

Put the seat on the wood brace, then lock it by 45*6 self-tapping screw.